
PROJECT MEMORANDUM



PLANNERS, LANDSCAPE ARCHITECTS, CIVIL ENGINEERS & SURVEYORS
1076 Centerville Road • Lancaster, PA 17601
(717) 898-3402 • Fax: (717) 898-9365 • www.dmai.com

Huntingdon County Comprehensive Plan Update DM/A Project No. 05-183

TO: **Comprehensive Plan Committee**

FROM: **DM/A Planning Group**

DATE: **December 2, 2005**

RE: **Huntingdon County Reconnaissance Tour**

On Wednesday, November 9, 2005, the DM/A Planning Group (DM/A) participated in an orientation tour of Huntingdon County with members of the Huntingdon County Comprehensive Plan Committee (CPC) and Richard Stahl, Huntingdon County Planning Director. The purpose of the tour was to highlight areas of Huntingdon County that the CPC members believed represented significant issues or opportunities that would be addressed during the planning process for the update of the Huntingdon County Comprehensive Plan.



CPC members tour Mount Union Borough

The tour commenced at 3:00 pm from the parking lot of the Huntingdon County Career and Technology Center in Mill Creek. Ten (10) CTC members, County Planning Director and two (2) DM/A staffers utilized two (2) vans along with one personal vehicle to take the tour.



Division Street, Mount Union Borough

The tour moved from the Huntingdon County Career and Technology Center to Mount Union Borough. Along the way, the group stopped at the U.S Silica Company sand mining operation in Mapleton Borough. The mined sandstone contains valuable glass sand that is among the best in the country.

In Mount Union, the Borough Manager gave a brief overview of the demographics of the Borough. There was general discussion regarding the reuse of school property, public housing, recent economic development projects, and state of the Borough's zoning regulations.

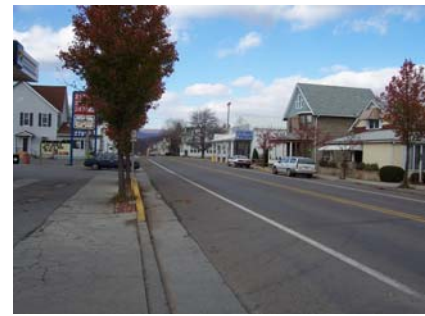


Riverview Business Park

The next stop on the tour was the Riverview Business Center on Route 522. Mr. Stahl provided background on the development of the Business Park and current occupants. The future growth opportunities for the Center

were discussed. In addition, wells located within the Business Center that serve as a source of water for Mount Union Borough were indicated.

The tour moved south on Route 522 to the Boroughs of Shirleysburg and Orbisonia. Along the way CTC members and Mr. Stahl indicated such areas as the former airfield, County-owned property, and historically significant areas.



Route 522, Orbisonia Borough

The tour headed west on Route 994 past the East Broad Top Railroad and into Rockhill Furnace Borough. The significance of the Railroad as an attraction for visitors to the region was discussed. Mr. Stahl highlighted the areas of flooding problems within the Rockhill Furnace Borough.



East Broad Top Railroad

The tour then headed north through Cromwell and Shirley Townships. General discussion centered on the agricultural uses of the area and the potential impacts of Concentrated Animal Feeding Operations. It was indicated that recent applications for CAFO facilities have met with opposition.

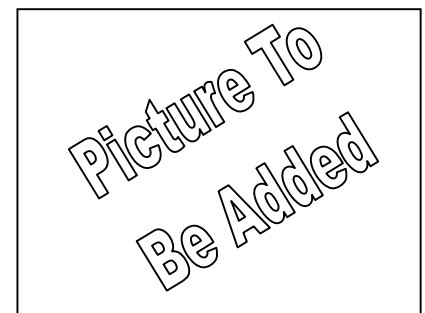
The tour then headed west on Route 22 through Huntingdon Borough to Smithfield Township. Along the way, Mr. Stahl indicated the location currently under development for the expanded Giant supermarket. It was noted that the building site has been raised out of the floodplain Juniata River to permit the construction.



**Non-Agricultural Use In
Agricultural Area of
Huntingdon County**

The group next stopped at the Wal-Mart site currently under construction in Smithfield Township. The process in which the site development has occurred, including the transfer of land ownership, was discussed. Mr. Stahl briefly highlighted some of the site improvements initiated through the County review process. There was general discussion regarding the state of site improvements, including landscaping, and the roadway improvements made to Route 22 and Route 26 as part of the development.

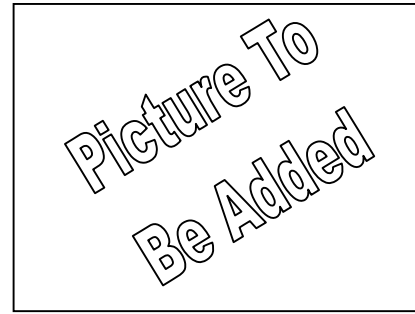
The group then traveled south on Route 26 to the Seven Points area of Raystown Lake, near the community of Hesston, in Penn Township. The group toured a residential development initially intended for seasonal housing. However, the development has become predominately a year-round housing area. Mr. Stahl identified problems the Township is currently having with the condition of the streets the developer is attempting to dedicate.



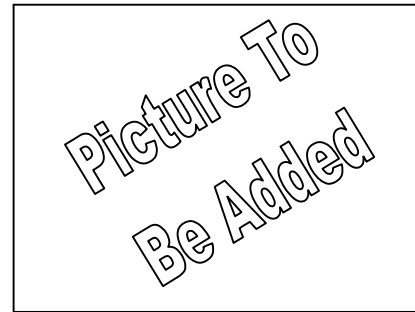
Future Giant Supermarket

The tour then proceeded north along Piney Ridge Road (SR 3033) back to Huntingdon Borough. Along the way the group viewed older seasonal housing. These included scattered sites as well as seasonal housing developments. Some having substantial access roadways while others having minimal access that would prove to be an issue while facing winter weather conditions.

The tour ended back at the Huntingdon County Career and Technology Center. Over the course of three hour tour, the CPC traveled over 80 miles.



Wal-Mart Site, Smithfield Township



Seasonal Housing, Seven Points